

## Access DH+ Devices via a TCP/IP Socket Connection

### FEATURES

- Support up to 10 TCP/IP devices
- Parse & concatenate ASCII/HEX data in up to 50 segments by delimiter or offset
- Fully configurable DH+ device
- Connects up to as many as 32 DH+ devices
- Effortless Browser Based Configuration, no programming software is required
- Simple data translation allows you to manipulate data as it passes between protocols
- 5-Year Hardware Warranty

### Map Your Legacy PLC to a TCP/IP Socket

You can now make your legacy serial PLCs look like Ethernet TCP/IP data! Any of your old serial PLCs like the PLC5 or SLC can now provide data to Ethernet TCP/IP applications.

It's the perfect tool to keep those old legacy PLCs from the scrap pile.

### How Do I Use the 460TCPDHM-D2E in My Application?

Incoming and outgoing ASCII data in TCP/IP packets is parsed into data segments and given a data type. Those values are then mapped to mating file locations in the DH+ devices like N7:200 or F9:1.

It really is that simple.

### Why Use Real Time Automation as a Gateway Supplier?

While there are certainly other companies offering protocol gateways, there is no one who provides the level of support and service that you receive from RTA.

When you call, a live person answers the phone. When you talk with sales, you will get honest answers and recommendations. When you get support, it is from an engineer who had a hand in the product's development, and support doesn't require a ticket or 24-hour wait.

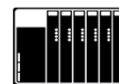


**ASCII**

Scanners, Printers,  
and ASCII Devices



460TCPDHM-D2E



**DH+**

DH+ Slaves

**A Solution, A Philosophy, the RTA Way.** We understand the long hours spent on a factory floor and the pressure to keep a line running and product flowing. That's how Real Time Automation came to be. You want easy-to-use solutions where the hardest part is to open the box. You need customer support second to none. If you get all that and a fun customer experience all the better. Thirty years later, our mission remains the same: **To move your data where you need it, when you need it, and how you need it.**

**ETHERNET TCP/IP FEATURES**

Operation Mode	Client or Server
Maximum Number of Devices Supported	10
Maximum Number of Characters Transferred	1024
Delimiter Processing	Incoming delimiters can be automatically removed; Outgoing delimiters automatically added if configured
Parsing	Parse String of ASCII Data in up to 50 Segments by Delimiter or Offset
Concatenation	Concatenate up to 50 segments/strings of ASCII data with optional delimiter

**DH+ MASTER FEATURES**

Operation Mode	DH+ Master
PLCs Supported	5/04, PLC5
Maximum number of Devices supported	32
Data Type Supported	100 Integers or 100 Binaries, or 50 floats, 82 character string per Scan line
Scan Lines	100 input / 100 output
Physical Connections	DH+

**INCLUDED WITH GATEWAY**

3' power cable with flying leads	5-year hardware warranty
IPSetup software - automatically locates RTA gateway on the network	Unlimited firmware feature upgrades for life
CAT5 crossover cable for direct connection to PC during programming	Complete, unlimited access to our industry leading support staff
	Recommended (not supplied): Belden 9463 Blue Hose®, 1 Pr #20 Str TC <a href="https://www.belden.com/">https://www.belden.com/</a>

**ELECTRICAL / ENVIRONMENTAL**

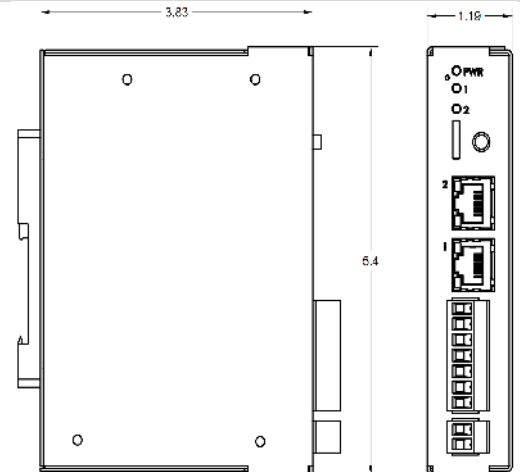
DC Input Voltage	12-24 VDC
Maximum Baud Rate	921.6K baud
Operating Temperature	-40 C to 85 C
Certification	CE Approvals

**ENCLOSURE / HARDWARE**

Size	5.40" x 3.83" x 1.19"
Weight	7.6 oz
Enclosure Type	Anodized Aluminum
Mounting	Din rail or panel mount
LEDs	Power LED, DH+ Status LED & general purpose LEDs on side

**GATEWAY FEATURES & FUNCTIONS**

Alarming	Set <, <=, >, >=, ==, !=, and change-of-state rules on any data moving through the gateway. If alarm rule is triggered an email notification can be sent.
Gateway Security	You can configure up to 9 different users access to diagnostic and configuration screens.
Translation Table	Allows for data manipulation during protocol translation. Scaling and other data format changes can occur in the gateway.
Status and Counters	Protocol specific status, counters, and error messages are accessible within the gateway's diagnostics page. They can also be delivered to a connected device.
Diagnostic Logging Page	Allows users to see and log start up sequences, protocol specific messages & error messages.

**NOT EXACTLY WHAT YOU WERE LOOKING FOR?**

Real Time Automation offers a full line of gateway products. Give us a call at 1-800-249-1612. Or, check out a listing at [www.rtautomation.com/products](http://www.rtautomation.com/products). We also offer customizations for unique applications.

CATALOG #	DESCRIPTION
460TCPDHM-D2E	Connects up to 10 Ethernet TCP/IP devices with as many as 32 DH+ devices

